



NORTH DELAWARE RIVERFRONT RAIL STATIONS URBAN DESIGN STUDY Philadelphia PA 2007-2008



Tacony Station: Street/Intersection Deficiencies

JzTI investigated a wide range of issues as part of the **North Delaware Riverfront Rail Stations Urban Design Study** (led by Interface Studio), which focused on the regeneration of four SEPTA regional rail stations as neighborhood activity centers. This process entailed determining the appropriate balance between parking and infill development in the direct vicinity of each station.

This study also included evaluation of numerous design schemes for dedicated parking areas and supplemental access facilities (kiss-and-ride, taxi stands, bus connections, bicycle access/storage, etc.), plus re-evaluation of the form and function of nearby streets and intersections.

TRANSIT REVITALIZATION INVESTMENT DISTRICT (TRID) PLANNING STUDY Philadelphia PA 2008

The pilot study for the **Transit Revitalization Investment District** initiative examined similar issues at the Temple Regional Rail Station and the 46th Street Station along the Market-Frankford El. From a transportation perspective, the main goal of this study was to ensure that the transportation infrastructure of the respective areas—including streets and intersections as well as bus stops and rail stations—fully reinforces the redevelopment objectives of the surrounding neighborhoods. (led by Interface Studio).

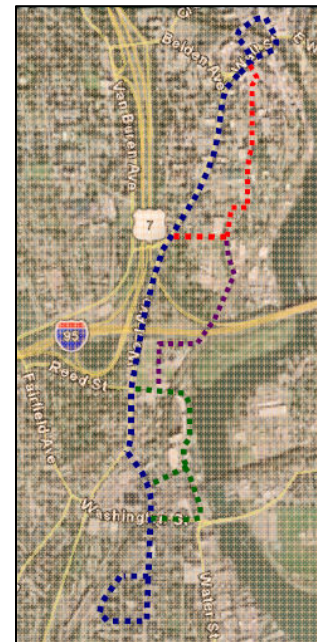


46th St. Station: Street Design Opportunities

NORWALK CIRCULATOR/DEVELOPMENT STUDY Norwalk CT 2008

JzTI assisted the Norwalk Redevelopment Agency in **Norwalk CT** to articulate the parameters of a new bus circulator service that would reinforce the agency's commitment to sustainable design. By closely monitoring the design quality and land-use mix of the redeveloping areas of Norwalk, the potential transit market can be fully maximized.

Frank Jaskiewicz previously contributed to similar redevelopment-focused circulator projects in **Hartford CT** and **Coral Gables FL**, where important development decisions were tied directly to the provision of a strong consistent transit service. Both these projects included major universities and cultural institutions as key stakeholders.



Norwalk Circulator: Proposed Route (Blue) with Potential Alternates