



## SAMPLE PROJECT EXPERIENCE TRANSIT DESIGN & TECHNOLOGY

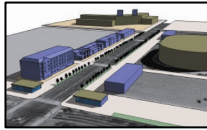


### NORWALK CIRCULATOR STUDY Norwalk CT 2008

JzTI is currently assisting the Norwalk Redevelopment Agency in evaluating service and technology options for a proposed circulator serving the city's main commercial spine. This work includes evaluation of potential vehicle technologies as well as investigation of specific service features (such as queue-jump lanes and advanced signal operations).



### STADIUM AREA TRANSIT STUDY Philadelphia PA 2004



The Stadium Area Transit Study examined a variety of options for improving the utility of public transit service to/from the four major venues of the South Philadelphia Sports Complex. Measures developed and evaluated included:

- Evaluations of both bus-based and people-mover circulation schemes.
- New light rail and reinstated streetcar services connecting to the city's urban waterfront and other key origins/destinations.
- Extension and/or reconfiguration of existing rail and bus services.
- Special event express trains and buses from various regional locations.

### MEMORIAL DRIVE REDEVELOPMENT STUDY Atlanta GA 2002



As part of the planning for revitalization of this declining traffic-choked suburban retail corridor (led by Urban Design Workshop and Robert Charles Lessor Co), Frank helped to examine the potential for incorporating a Bus Rapid Transit service within the highway's median. This included cross-sectional design and the examination of signaling and operational options.

### CORAL GABLES CIRCULATOR Coral Gables FL 2002

The Coral Gables Circulator was developed to connect the vibrant center of Coral Gables with the Douglas Road Station of the Miami Metrorail system. Frank's role in this project, led by David Plummer and Associates of Coral Gables, included various components of route planning, operations planning, route design, graphic presentation, stop locations, and phasing.



### ROUTE 140 BUS PRIORITY STUDY London England UK 2003



The Route 140 Bus Priority Study examined opportunities for improving the performance of a heavily-patronized bus corridor from Heathrow Airport to the London Boroughs of Ealing and Harrow. This entailed a detailed examination of slow points along the corridor and physical assessment of the viable opportunities for various types of priority measures, including:

- Traffic-Segregated Bus Lanes where viable
- Queue-Jump Lanes and Pre-Signals
- Bus-Only Roadways with Access Controls
- Reconfiguration of Parking/Access Lanes in congested corridors

### CANBERRA CITY TRANSPORT OPTIONS STUDY Canberra ACT Australia 2006

The Canberra City Transport Options Study evaluated a series of concepts for replacing the national capital's central bus interchange with a distributor loop system, including:

- Overall utility and viability of the proposed 'station' locations.
- Required infrastructure including station facilities and bus priority.
- Opportunities for improving through-speeds and overall reliability.

