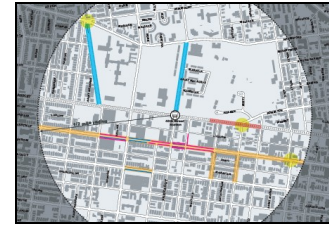




TRANSIT REVITALIZATION INVESTMENT DISTRICT (TRID) PLANNING STUDY Philadelphia PA 2008

The pilot study for the **Transit Revitalization Investment District** initiative—focusing on **Temple Regional Rail Station** and **46th Street Market-Frankford El Station**—entailed examination of the transportation infrastructure (including streets and intersections as well as bus stops and rail stations) to propose upgrades that could reinforce the redevelopment objectives of the surrounding neighborhoods. (led by Interface Studio)



NORTH DELAWARE RIVERFRONT RAIL STATIONS URBAN DESIGN STUDY Philadelphia PA 2007-2008



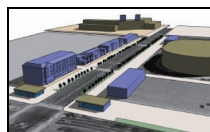
JzTI investigated a wide range of issues as part of the **North Delaware Riverfront Rail Stations Urban Design Study**, which focused on the regeneration of four SEPTA regional rail stations as neighborhood activity centers. This process entailed determining the appropriate balance between parking and infill development in the direct vicinity of each station. (led by Interface Studio)

NORWALK TRANSIT CIRCULATOR STUDY Norwalk CT 2008

JzTI is currently assisting the **Norwalk Redevelopment Agency** in evaluating service and technology options for a proposed circulator serving the city's main commercial spine. This work includes evaluation of potential vehicle technologies as well as investigation of specific service features (such as queue-jump lanes and advanced signal operations).



STADIUM AREA TRANSIT STUDY Philadelphia PA 2004 (while with Kise Straw & Kolodner Inc.)



The **Stadium Area Transit Study** examined a variety of options for improving the utility of public transit service to/from the four major venues of the South Philadelphia Sports Complex. Measures developed and evaluated included:

- Bus-based and people-mover circulation schemes.
- New light rail and reinstated streetcar services connecting to the city's urban waterfront and other key origins/destinations.
- Extension and/or reconfiguration of existing rail and bus services.
- Special event express trains and buses from various regional locations.

CORAL GABLES CIRCULATOR Coral Gables FL 2002 (while with Glatting Jackson Inc.)

The **Coral Gables Circulator** was developed to connect the vibrant center of Coral Gables with the Douglas Road Station of the **Miami Metrorail** system. Frank's role in this project, led by David Plummer and Associates of Coral Gables, included various components of route planning, operations planning, route design, graphic presentation, stop locations, and phasing.

